

Serving Students with Learning Differences



AS THEY TRANSITION TO, PERSIST, AND SUCCEED IN THEIR
EDUCATIONAL AND VOCATIONAL ENDEAVORS



TUTORING. MENTORING. COACHING.

IMPACT REPORT

NORTHBRIDGEAZ.ORG

501C(3) NON-PROFIT
EIN: 47-1080353

Letter from the Executive Director



TUTORING. MENTORING. COACHING.

7600 N. 15th Street, Suite 150
Phoenix, AZ 85020

October 18, 2024

Dear Partners, Families, & Community Members,

NorthBridge College Success Program ("NorthBridge") started with a simple but very powerful belief: we provide the **opportunity** for students with **learning differences** to create **individual success** across the **community** of Arizona. We believe that:

- All students deserve the opportunity to believe that 'College is Possible'.
- All students deserve to experience success in their pursuit of a career pathway.
- Success is the result of individuals, families, communities, and business partners working together & collaborating to achieve desired outcomes.

Since 2011, NorthBridge has been serving students with learning differences succeed in the college, vocational program, certification program, and /or career path of their choice.

Students with learning and attention issues are as smart as their peers and, with the right support, can achieve at high levels. We have discovered that identifying the best ways to serve students with learning differences requires time, thoughtfulness, engagement, and resources.

If we believe that students with learning differences can achieve their goals, then we must actively engage, advocate, and build relationships with our students, families, and community partners.

As we celebrate our impact in 2024 and undertake work in 2025, I invite you to join NorthBridge to create pathways and opportunities for our students ages 14+ in AZ with learning differences.

With Gratitude,

Daylee Magneson
Executive Director, NorthBridge



Board of Directors

The NorthBridge Board of Directors (BOD) supports the operations of the organization. They oversee the work of the Executive Director and assess the overall direction and strategy of the business. The BOD includes the Board Chair, Vice Chair, Treasurer, Secretary, and Officers.

Member	Position	Professional Affiliation
Nancy Heller	Chair	Community Advocate
Debra Fogel	Vice Chair	VP of Operations, Ironwood Cancer & Research Centers
Caden Gillespie	Treasurer	Business Operations, ASU
Yulissa Reynoso	Secretary	STEM Education Specialist and Academic Counselor
Angie Dittrich	Officer	Officer Risk Management, Process Improvement
Lori Kirsch-Goodwin	Officer	Owner, Kirsch-Goodwin & Kirsch, PLLC
Julia Fields	Officer	Academic Success Advising Coordinator, ASU
Julie Heineking	Officer	Experienced Community Specialist
Byron Harrod	Officer	CFO, Valley Forge & Bolt MFG
Gary King	Officer	Supervisor, Parker Aerospace

The NorthBridge organization is made up of the following leaders to serve students: the Board of Directors, Executive Director, Program Director, Administrative Assistants, Outreach Coordinator, and Academic Coaches.

NorthBridge Organization

Board of Directors

Assess the overall direction and strategy of NorthBridge as a 501(c)(3) non-profit

Executive Director

Executes fundraising, student recruitment, program growth and development, organizational management, and adhering to the organizational budget.

Program Director

Responsible for hiring the academic coaches, scheduling, addressing parent-student concerns, and overseeing the day-to-day operation of the business.

Academic Coaches

Provide direct individualized support to high school, college, and vocational students through academic tutoring, executive functioning skills coaching, and mentoring.

Administrative Assistant

Assists with reporting, correspondence, and communication to implement the strategic goals and objectives of NorthBridge.

Outreach Coordinator

Ensures transition fairs, seminars, conferences, and other outreach opportunities activities are attended with corresponding NorthBridge material.



BY THE NUMBERS- PROGRAMS

Our existing programs and services are the foundational building blocks for our future. NorthBridge continues to build current programs and services to address opportunities and meet the needs of students across Arizona.

We will continue to focus our fundraising efforts on revenue generation from the following areas:

- Fee for service
- Sponsorship programs
- Government partnerships
- Annual Events

We are constantly innovating our (4) main programs:

- High School Success
- College Success
- Test Prep Success
- Career Prep Success

Sessions occur at the same days and times each week, with the same academic coach. Students work on time management, communication with teachers, e-mail etiquette, organization, planning ahead, self-advocacy skills, accountability, and submitting assignments accurately.



TUTORING. MENTORING. COACHING.



As of the 2023-24 school year, students that worked with NorthBridge maintained a cumulative Grade Point Average of 3.34.

- Test Prep (GED, ACT/SAT)
- High School Classes
- Entrance Exams
- Community College
- Universities
- Trade Schools
- Certifications
- Career Prep

NorthBridge has helped students of all levels succeed at all different types of educational goals throughout the Valley and around the country at various schools and universities in and out of state.



On average, students that work with NorthBridge take between 4-6 courses during an academic year, totaling 12-15 credits. Additionally more than 90% of enrolled courses end with a passing grade! Since 2014, we have helped more than 300 students pass more than 3,200 different courses at more than 40 schools.



BY THE NUMBERS - FINANCIALS

For Fiscal Year 2024 (July 1, 2023- June 30, 2024), NorthBridge was able to serve students working towards their GED, High School Diploma, Associates Degree, Bachelors Degree, certification, and career of choice.

Statement of Financial Position:

- Largest portion of assets is cash.
- Largest liability is the business credit card.
- Largest Net-Asset is unrestricted funds.

Thank you to our families, donors, and community members!

Statement of Activities:

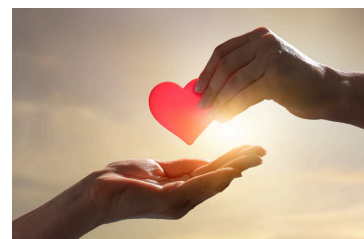
- Raised over \$55,000 at our 2nd annual community breakfast!
- Brought in over \$180,000 through tuition and state service contracts.
- Ended the fiscal year with a surplus of over \$25,000.

THE FUTURE IS BRIGHT



Planning for the future:

- Implemented a High-Yield Savings Account.
- Invested in a Certificate of Deposit (CD).





MISSION

The mission of NorthBridge is to provide support, resources, and guidance to students with learning differences as they transition to, persist and succeed in higher educational and vocational opportunities.

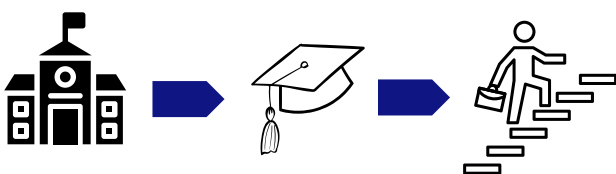
STUDENT RETENTION

Student recruitment and enrollment is essential to the expansion of NorthBridge services. Growth of the student population will come from fee-based programs, government partnerships, and sponsorship programs. The total student count is based on the combination of the three service areas. The breakdown is listed below, with data from the 23-24 school year. Projections for the (2) upcoming academic years are included.

School Year	Fee-Based	Government Partnerships (VR Contracts, etc.)	Sponsorship	Foster Students	Total
23-24	26	34	2	2	64
24-25	30	39	2	2	73
25-26	33	45	3	3	84

We are striving for services to be provided all over the state of Arizona, including the following 15 counties in Arizona: Apache, Cochise, Coconino, Gila, Graham, Greenlee, La Paz, Maricopa, Mohave, Navajo, Pima, Pinal, Santa Cruz, Yavapai, and Yuma Counties.

Services are provided at local community college, university, and public libraries in Arizona. Sessions are also conducted virtually through Google Meet.



We assist students making the **transition** from **high school to college**, and now, from **college to career!**

EXPANSION & PARTNERSHIPS

We continue to serve students referred to us through the **Arizona Department of Economic Security Vocational Rehabilitation Services (VR)** to assist students in their post-secondary institutions and careers.

Students are eligible for VR services if they have the desire to work and require VR services in order to **prepare for, obtain, or maintain work**, along with:

- Are at least 14+ y/o.
- Have the following that impacts their ability to prepare for, obtain, or maintain work:
 - Disability
 - Chronic disease
 - Learning issue
 - Physical issue
 - Mental health issue
- Have the proper documentation, like an IEP, MET, proof of accommodations, or psych evaluation, medical professional diagnosis.



VR Contracts address the following executive functioning skills:

- Communication
- Time management
- Self-advocacy
- Teamwork
- E-mail etiquette
- Organization
- Planning ahead
- Accountability



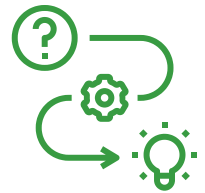
and many other skill sets as our students move on into their careers.



NorthBridge partners with AZDES by serving students in the following (5) state-approved contracts

1. Tutoring

NorthBridge provides individualized tutoring to students in college courses with learning differences.



2. Career Exploration (CE)

We provide individualized instructions and assistance to students in (3) career fields of their choice.



3. Supported Education (SE)

We help the student select a career suitable to the student's abilities, interests, and values that matches their vocational strengths and functional limitations.



4. Work Adjustment Training (WAT)

NorthBridge provides soft skills and transition to employment, including Communication, Teamwork, Critical Thinking and Problem-Solving, Task/Time Management & Organization, Attendance, Manage Symptoms/Effects of Disability, Appearance and Hygiene, & Self-management.



5. Rehabilitation Instructional Services (RIS)

NorthBridge assists students with orientation and adjustment to disability, orientation and mobility training services, and manual adaptive communication training.



STUDENT SUCCESS

WHAT OUR STUDENTS ARE SAYING

Emma

“I was able to achieve my goals for the semester and it was to pass math exams. After many years of not being able to pass a math test, I was finally able to pass all of tests and quizzes with an A.”



Brandon

“The staff [is] wonderful and awesome. The support provided by the staff helps me know what my strengths and weaknesses are. That's very important. The more I learn about what I need help with the more independent I can be. Thank you all!”

✦ DOLLAR FOR DOLLAR IMPACT ✦

Donations received through our annual breakfast and throughout the year are used in the following ways:

- Providing individualized, comprehensive 1:1 support for students with learning differences (LD) in executive functioning and academic tutoring.
- LD includes Autism spectrum, ADHD, Dyslexia, Non-Verbal Processing Disorder, Anxiety Depression, and many other differences.
- Sessions are at the same days & times each week with the same NorthBridge coach.
- Covering various skill sets, including time management, prioritization, organization, self-advocacy, setting SMART goals, and communication with instructors.

Every NorthBridge academic coach has a Bachelor's degree in an array of fields. Many are continuing their education and pursuing their Master's degrees while simultaneously working as a NorthBridge coach.

WITH GRATITUDE



TO OUR SUPPORTING PARTNERS who were sponsors of our annual Breakfast

- Nancy and Will Heller
- Valley Forge & Bolt Mfg. Co
- Tim and Joan King
- Kirsch-Goodwin & Kirsch
- Byron Harrod
- New Way Academy
- Kids with Autism CAN
- Sensory Cooking
- Floyd Bienstock
- Andrew and Marcia Meyer



TO OUR IN-KIND SPONSORS who contributed items at our annual Breakfast

- The Nail Room
- Optical Gallery of Arizona
- Moonlight Dance Studio
- Six Sisters and Me
- Jackie Cohen
- Love your Memories Photography
- Frenzy Fix Boutique
- Johanna Warner

